

COORDINATED
COMMUNITY RESPONSE
TO ADDRESS INTIMATE
PARTNER VIOLENCE

Dr. Sarah Leat, Ph.D., LMSW
Assistant Professor
School of Social Work
University of Memphis



Agenda

Intimate Partner Violence in Shelby County

Impacts of Intimate Partner Violence

Prevention and Intervention Models

Current Project in Shelby County

What is domestic violence?

Umbrella term including family violence, dating violence, intimate partner violence, and elder abuse (CDC)

Focus will be on intimate partner violence

IPV: physical, emotional, sexual, economic violence by current or former partner (CDC)

Nationally 1 in 3 women and 1 in 9 men experience severe intimate partner violence in 2025

(Council on Criminal Justice)

Domestic Violence in Shelby County

17,217 cases of DV in 2024 (Crime Commission)

Memphis ranked top ten cities in domestic violence incidents in 2024 (Council on Criminal Justice)

37 Intimate partner homicides 2025 in TN – 8 in Memphis (TN Coalition)

770.2 cases per 100k in 2025 (Council on Criminal Justice)

Appears to be down in 2026 (Memphis Safe Task Force)

**Only numbers for reported incidents*

Impacts of IPV

Individual

Mental health
Physical health
Employment
Education
Isolation

Family

Child maltreatment
Intergenerational
transmission of violence
Poverty

Community

Economic impacts
Healthcare impacts
Increases in community
violence

Effective Prevention and Intervention for IPV

Primary Prevention

Change social norms through education

Education around healthy relationships vs. relationship violence

Increase economic stability to reduce relationship stress

Secondary Prevention

Screening and early detection
– address it before it gets worse

Training for community members to recognize signs

Tertiary Prevention

Advocacy, services and support

Batterer intervention programs

Criminal justice system response

Evidence-Based Strategies

**Family Justice
Center Model**

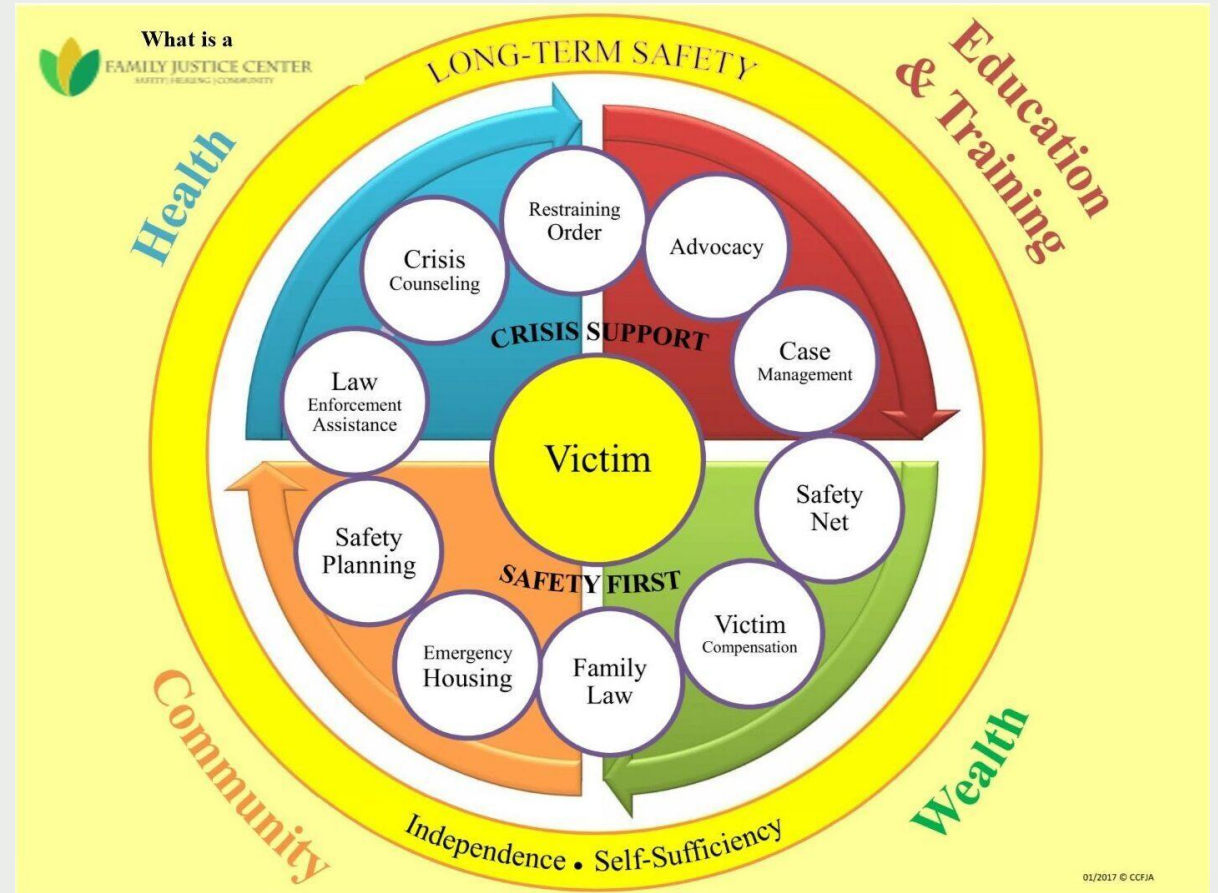
**Coordinated
Community
Response**

What is a family justice center?

Places all social services in one location

Law enforcement also co-located

Focus is to surround victim/survivor with resources to prevent future violence



What is a coordinated community response?

Purpose: increasing collaboration and reducing recidivism

Effective when social services are present for victims and law enforcement responses and criminal justice proceedings hold offenders accountable

CCR shifts responsibility for safety away from the victims to the community and services existing to support them.



Role in Community

FJC functions at the individual level

CCR functions at the community level

Can be co-located or separate

Memphis/Shelby County

2021 UofM Public Safety Institute report revealed lack of coordination among service agencies, law enforcement, and criminal justice system

Victims unaware of available resources and uncooperative with criminal justice processes

Number of repeat offenders high

UofM Response

PSI received grant from TN Office of Criminal Justice Programs to create CCR

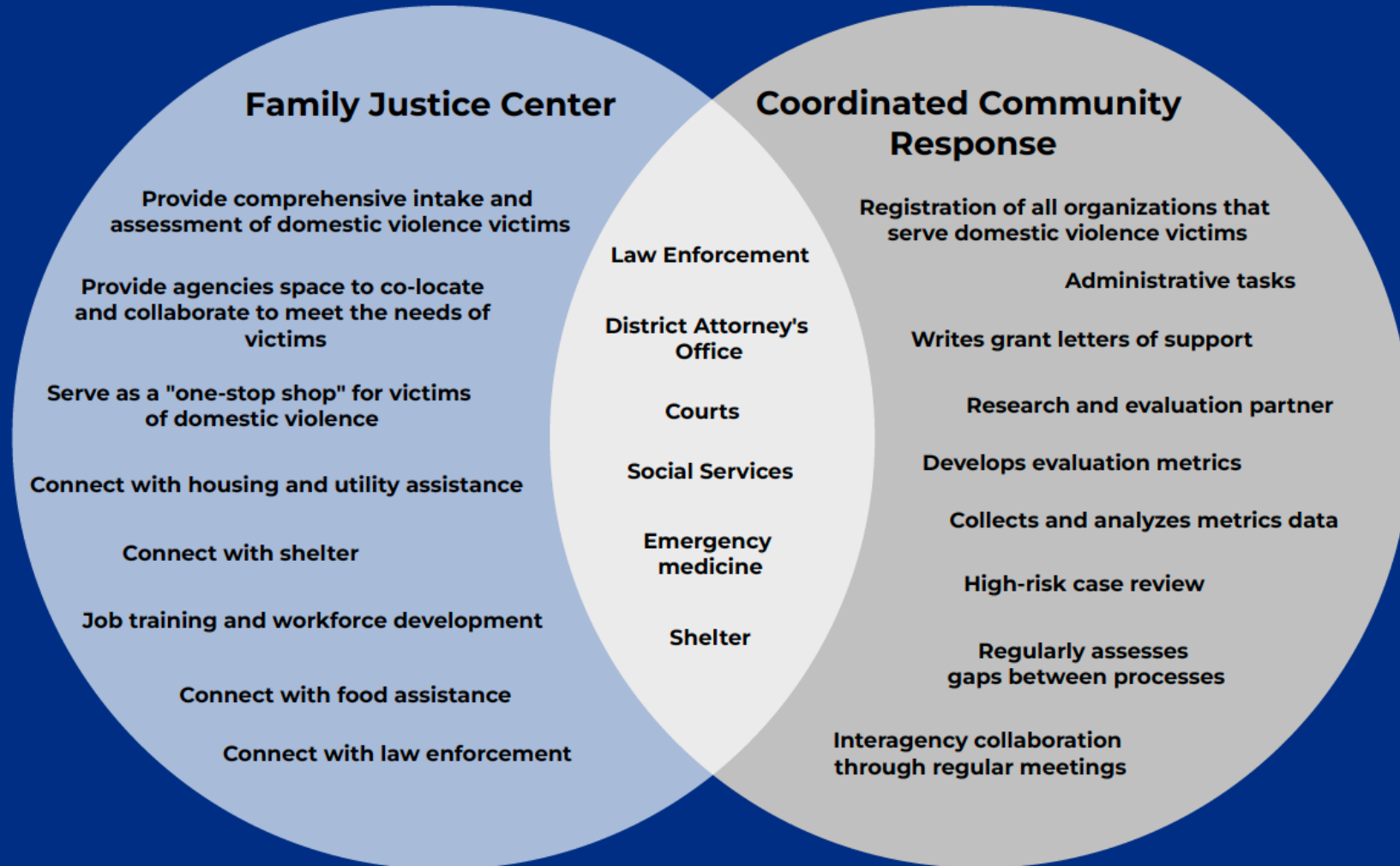
UofM faculty are conveners of CCR - novel

50 current members signed commitment letter

Agencies include YWCA shelter, CVRCC, non-profits, MPD, DA's Office, etc.

Creation of new Family Justice Center – FSC closure summer 2025

Shelby County Domestic Violence Services



Current Impact

Improving coordination and collaboration through monthly meetings and listserv

Creation of CCR Strategic Plan in partnership with social services, law enforcement, and DA's Office

Increase transparency in DV/IPV case information through partnership with Crime Commission

Community-level support: grant writing, evaluation, trainings, etc.

Vision for Shelby County

1

Strengthen primary prevention through education and community engagement

2

Improve early identification and access to survivor-centered services

3

Reduce recidivism rates of repeat offenders through effective criminal justice processes

4

Build a coordinated, data-driven system response to IPV that improves accountability and enhances survivor safety

Thank you!

srrbnsn2@memphis.edu

Public Safety Institute Strategic Plan for CCR:

<https://www.memphis.edu/psi/research/>